



# The Garden Trellis



Newsletter for the SAN CLEMENTE GARDEN CLUB,  
Member of California Garden Clubs, Inc., Orange County District  
Member of National Garden Clubs, Pacific Region

October, 2021  
Vol. LIII No. 2

**"ENGAGE - ENJOY - SUPPORT"**

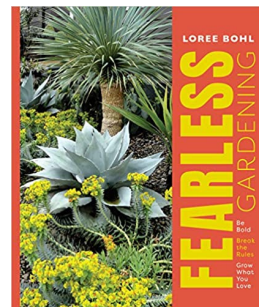
## President's Message



How can it already be October? Today (Sunday Sept. 11) I heard a commercial for live Christmas Trees at Home Depot. Seriously. Can we all agree right now not to let the retail giants rush us into the holiday season? Can we please enjoy the final heat waves of summer? Let's not let ourselves get pushed into the fall/holiday frenzy until we are good and ready. Celebrate – have meals with friends and family, garden, shop – but do it because you want to – not because the corporate marketers say you must.

A very good way to celebrate would be to invite friends & family to the **Fall Plant Sale on October 9**. You'll find great plants at terrific prices. Let yourself buy too many. It's good for the soul. After the sale, wander up Avenida Del Mar and have lunch. There are several restaurants offering outdoor dining. So many fun shops to peek into – you'll have a great afternoon. All the while you'll be thinking about where to plant what you just bought. That is a problem for tomorrow.

For this afternoon, I'd like to suggest that you browse the book "Fearless Gardening" by Loree Bohl. It is a fun book that inspires you to plant what you love, break rules, play and experiment in your garden. Crevice gardening? Stumperies? Vertical gardens? So many fun and refreshing ideas, you will wake up Sunday morning ready to have fun in the garden.



**THE FALL PLANT SALE (Need Trucks!)**

**Saturday, October 9, 8 am - 1 pm**

**We need volunteers Oct. 8(set up) and Oct. 9 (the sale).**

**Hypertufa Workshop, Wednesday, October 27 9:30 am.**

**at home of Launa Gould**

There are a few spots left in the hypertufa workshop.

Create a rustic, textured pot(s) from Portland cement, perlite or vermiculite and water. All materials are provided but bring your own

custom container(s) in size, shape and look of your choice to be the mold for the hypertufa. Fee \$5. Workshop limited to 12. To reserve a place in this workshop, email Nina Ackmann at [ninaackmann08@gmail.com](mailto:ninaackmann08@gmail.com). Fee will be collected at time of workshop.



## Inside This Issue

District, State, and National . . . . .	Page 2	Membership . . . . .	Page 4
Oct. Meeting Program . . . . .	Page 2	Ralphs Contribution Program . . . . .	Page 4
Fall Plant Sale . . . . .	Page 2	Volunteers Needed . . . . .	Page 4
Plant for my Entry . . . . .	Page 2	ECO Warriors . . . . .	Page 5
Remembering Cindy . . . . .	Page 3	Civic Beautification . . . . .	Page 5
Holiday Luncheon . . . . .	Page 3	Composting Article . . . . .	Page 6
Sponsors . . . . .	Page 4	Clover Question . . . . .	Page 6

### San Clemente Garden Club

P.O. Box 3891

San Clemente, CA 92674-3891

[www.sanclementegardenclub.com](http://www.sanclementegardenclub.com)

Organized 1951

#### President:

Betsy Dunn

#### 1st Vice Pres./Programs:

Joanne Baggaley/Carol Luetz

#### 2nd Vice Pres./Membership:

Mary Blumé

#### 3rd Vice Pres./Ways & Means:

Donna Vidrine

#### Secretary:

Diane Murico

#### Correspondence Secretary:

Carol Glasheen

#### Treasurer:

Elyse Crane

#### Advisor:

Teresa Whitney

#### Webmaster:

Stephen Rees

#### Garden Trellis Editor:

Jim Proett

#### Garden Trellis Proofreader:

Launa Gould

#### Printed Circulation:

Bill Schafer

#### Online Circulation:

Stephen Rees

#### OC District Director :

Launa Gould

#### OC District: Programs:

Bette Langford

#### CGCI: eNews Editor

Launa Gould

#### Deadline for Articles:

15th of each month

**Board Meeting**  
**October 6, 10 am,**  
**at the VIP Lounge at the Outlets.**

**Orange County District, State  
and National News/Events**  
**DISTRICT MEETING**

**Mon., Oct. 25            9:30 am - 11:00 am**  
Location: **virtual** - email [LaunaG@cox.net](mailto:LaunaG@cox.net)  
for link.  
Educational speakers  
Club announcements  
Learn what Orange County garden clubs  
are doing.

**October Meeting Program**

Date: **Wednesday, October 6, 2021**  
Time: 1 pm  
Place: St. Andrew's by the Sea Methodist Church  
2001 Calle Frontera, San Clemente 92673  
Subject: Hot Color, Dry Garden: Color-filled  
& Waterwise-Colorful Plants  
Speaker: Nan Sterman

**CONFUSED ABOUT COLOR?**  
Designing a garden with color is exciting, but it can also be a little challenging to know where to start. Join **Nan Sterman**, garden designer, author, and award-winning communicator as she tells us where to find inspiration for color and uncommon color combinations in our gardens. This will be a most entertaining and inspiring presentation; you won't want to miss it!



**Can't wait for the Fall Plant Sale!**

from Donna Vidrine

Mark your calendars for **Friday, October 8**, for set up, and **Saturday, October 9**, for the sale.  
(See the Attached Flyer)

The sale will be a little different this year but will be lots of fun as usual. We will all need to help keep our customers socially distanced and wearing masks even if we've been vaccinated--no big deal, we're used to it! If you've propagated plants and they look good and are well rooted, bring them to the setup on **Friday, October 8**, anytime from 9-12 am. We'd like to get them priced and set up into the room. Make sure they represent the SCGC and if you saw it, you'd want to spend money on it. We're also having a mini-flea market in the same Multi-purpose room that the plants are in, so if you have smaller garden items or pots you'd like to donate, bring those on Friday too!

We will need lots of volunteers to work both days and also to pick up plants and equipment from our storage on Friday. We are in desperate need of a couple of trucks so please call me if you have one and can help! Volunteers on Friday will help set up the room with plants and price and groom any donated plants that need it. Saturday volunteers will help with cashiering, moving people in and out of the sale as orderly as we can, and keeping the numbers in the room manageable and safe--as well as helping customers pick plants and clean-up at the end of the sale.

Volunteer times on Friday are from 9 -11 am and 11 am -1 pm. Volunteer times on Saturday will be from 8 -11 am and 11 am-2 pm--or come when you can, and stay as long as you can. Oh, and by the way, as a volunteer, one of the biggest perks is getting a first look at what's going to be on sale. Looking forward to a very fun day!

Let me know if you'd like to volunteer by calling or emailing me. **Donna Vidrine 949-202-7210**  
**[rookqs@cox.net](mailto:rookqs@cox.net)**

**A Plant for My Entry**

from Cathy Wilson, Red Bluff Garden Club

I needed to plant an empty pot by my entry. This time instead of one large perennial, I decided to find several smaller annuals to provide more color and interest. I wanted to create a "thriller" (tall) for the center, two plants for the "filler" (mid-section) and finally a "spiller" (cascades over the pot).

For my thriller I selected a cordyline which is a perennial that will grow nicely for years in this sized pot. It has long sword-like maroon leaves edged in bright pink. The variety is named 'Electric Pink'.

I also chose 2 coleus as my fillers. They both have striking colors in maroon and lime. These varieties are 'Royal Apple Brandy' and 'Chocolate Drop'. My spiller is a sweet potato vine called 'Margarita'. These plants are common and can be easily found.



## Remembering Cindy from Betsy Dunn



Cindy Burns joined the SC Garden Club in 2012. She jumped right into service in 2013 when she volunteered to be the Publicity chair – no easy task for someone new to the organization. The next position she served in was that of Membership Vice President. Always a

friendly face welcoming members and guests alike at the meeting sign-in table. She graciously stepped up in 2019 to become President. At that time, she was already dealing with her ALS diagnosis, but enthusiastically served as our President for two years.

Cindy was determined to stay active, all part of her positive, energetic personality. In addition to her duties as President, she continued to participate in many activities – Beautification, Propagation, and Eco Warriors. She was also an active volunteer raising funds for ALS research.

Always a delight to work with, Cindy brought energy, courage, talent, and friendliness to anything she did for San Clemente Garden Club. Her contributions were many as are the friends she leaves behind. She will be missed.



## To the Garden Club from Mike Burns

My beautiful wife Cindy Burns passed away peacefully yesterday (9/8). She was the finest person I have ever known. As you know, she loved gardening and the San Clemente Garden club. Cindy fought her ALS disease for the last four years with courage and grace. One of the last things she did was to read the latest Trellis Newsletter.

Sincerely,  
Mike Burns



## Holiday Luncheon - Dec. 1

from Weej Baggaley and Carol Luetz

It's time to make your reservations for our

### Annual Holiday Luncheon

Join your Garden Club friends as we celebrate the holiday season at beautiful

### BELLA COLLINA GOLF CLUB

Enjoy delicious food, a glass of wine if you like, and holiday entertainment. We

encourage you to bring along cash for wonderful raffle items, and a new toy to donate to FAM.

Register for the luncheon using the flier attached to the end of this newsletter.

Wednesday, December 1  
Bella Collina Golf Club

Social Time 11:30

Lunch 12:00

\$35 check or online

Payment due  
November 16





(Please add the new member info listed below to the Notes section at the end of the Yearbook Directory)

**New Membership** from Mary Blumé

**Welcome! to our newest members:**

**Bob Gau 714-269-9974**

268 Avenida Montalvo #5 KSgau@cox.net  
San Clemente, 92672-4479 Joined: 2021 Texting: Yes

**Karen Gau 714-269-9974**

268 Avenida Montalvo #5 KSgau@cox.net  
San Clemente, 92672-4479 Joined: 2021 Texting: Yes

**Sally Mills 925-408-2616**

2906 Calle Grande Vista cleomills@comcast.net  
San Clemente, 92672-3501 Joined: 2021 Texting: Yes

**Fran Tracy 949 -887-0198**

2129 Calle Ola Verde ftracy7@gmail.com  
San Clemente, 92673-5627 Joined: 2021 Texting: Yes

**Mary Lynn Smith 949-370-0653**

2129 Calle Ola Verde marylynsmith@cox.net  
San Clemente, 92673-3700 Joined: 2021 Texting: Yes

**Gary Smith 949-370-0653**

2129 Calle Ola Verde marylynsmith@cox.net  
San Clemente, 92673-3700 Joined: 2021 Texting: Yes

**Oceane Alirol 949-370-4978**

229 West El Portal #A oceanealirol@gmail.com  
San Clemente, 92672-5030 Joined: 2021 Texting: Yes

**Oliver Alirol 949-370-4978**

229 West El Portal #A oceanealirol@gmail.com  
San Clemente, 92672-5030 Joined: 2021 Texting: Yes

**Welcome to Returning Members:**

**Judith Deshaies 949-292-9878**

34 Corniche St. Unit G jdeshaias@msn.com  
Dana Point, 92629-4078 Joined: 2019 Texting: Yes

**Clara Foulger 949-498-0509**

190 Hiram Ave.  
Newbury Park, 91320-3215 Joined: 1985 Texting: No

**Volunteers Needed** from Sarah Gould

Volunteers are needed at local schools to help weed and trim plants. We will meet at the school at 8am please bring your own tools. Dates are as follows:

**Oct 9** - Lobo Elementary school

**Oct 23** - Truman Elementary School

Contact Sarah Gould for more information -

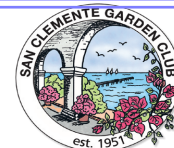
310-597-0773 or email Sarahpgould@gmail.com

**Ralphs Community Contribution Program**

from Weej Baggaley

Our San Clemente Garden Club has partnered with Ralphs to raise money for our club through the Ralphs Community Program. After you link up your Ralphs card, Ralphs will donate a percentage of every purchase you make to our club, every time you shop and use your Ralphs card or linked phone number. (You can search for our club alphabetically, or use our code **AY273**.) [https://www.ralphs.com/asset/ralphs\\_instructions\\_2016-2017](https://www.ralphs.com/asset/ralphs_instructions_2016-2017)

**Support our 2021 - 2022 Club Sponsors**



**San Clemente Garden Club  
2021-2022 SPONSORS**



**Rose Sponsor \$500**

\*Distinctive Coast Properties  
110 Avenida Del Mar, SC - KK Ciruli  
949.547.8484 dcpsanclemente.com



**Daisy Sponsors \$250**

\*Always Inn B&B - Freda D'Souza  
177 Avenida Cabrillo, San Clemente  
949.374.4944 owner@alwaysinn.com

\*Morgan Stanley - Ken Wakefield  
800 Newport Center Dr., Newport Beach  
949.760.2405 kennison.wakefield@morganstanley.com

Bemus Landscape, Inc.  
P.O. Box 74268, San Clemente  
888.557.7910 bemus.com

\*The Nelson Family  
We love the San Clemente Garden Club!

\*Shirley Eramo OC Coastal Realty  
635 Camino Las Mares, 3rd Fl. San Clemente  
949-244-2680 shirley@theoceancalls.com  
DRE # 01746885

Plant Depot  
32413 San Juan Creek Rd., SJC  
949.240.2107 plantdepot.com

Glen's Landscape & Lighting  
Native Plant Specialist, San Clemente  
949.492.6492 glenslandscape.com

Rod's Tree Service  
P.O. Box 3897, San Clemente  
949.492.0657 rodstreereservicesc@yahoo.com

Green Thumb Intl. Nursery  
23782 Bridger Rd., Lake Forest  
949.837.3040 greenthumb.com

Rainbow Sandals  
326 Calle de los Molinos, San Clemente  
949.492.4930 info@rainbowsandals.com

\*Lisa B. Designs - Lisa Spinelli  
Graphic Design, PhotoShop, Signage  
949.498.0877 lisabdesigns@cox.net

Serrano Creek Soil Amendments  
25200 Trabuco Rd., Lake Forest  
949.768.1008 serranocreeksoils.com

Luna Landscape & Luna Tree  
114 W. Paseo de Cristobal, San Clemente  
949.492.3208 lunatreetrimming.com

Shore Gardens Nursery  
201 South Ola Vista, San Clemente  
949.492.3526 shoregardensnursery.com

**We are very Grateful to our Sponsors!  
Please bring them your business.**

Asterisk (\*) indicates San Clemente Garden Club Member

### Civic Beautification from Molly Fehrenbach

Molly Fehrenbach, Diane Murico and new member Sally Mills came to Park Semper Fi on Wednesday, September 8, to work in the garden. We moved and replanted two Narrow-leaf Milkweed plants to a different area of the garden. We also trimmed lots of the overgrown woody plants in the same raised bed area where the new wall was going to be installed there. It was a quick and productive one and a half hour session as Wayne efficiently helped moved our debris to the trash can. Our next outing will be on Wednesday, October 13 at 0830.



### Civic Beautification from Kieu Doan

We had a huge turn out at the Casa Romantica Garden on Wednesday, September 15. A big thank you to Sherry Christensen, Catherine Hall, Sally Mills, Diane Riopka, Launa Gould, Vi McMahon, Kieu Doan, Carol Luetz and Sally's friend Eileen Baar who came to help and took our beautiful picture. We trimmed back the spent blooms of the Euphorbia or Mediterranean spurge, Popcorn Cassia plant, Coyote shrub, pulled out lots of weed and tidied up the Native Bowl Butterfly Garden to prepare the garden for their annual Toast to the Casa Gala. It was a beautiful and productive day as we worked and visited with each other. Our next outing will be on Wednesday, October 20 at 0830. Come join us and bring your friends.



### Eco Warriors Vanquish Trash

from Weej Baggaley

The Eco Warriors struck again on August 30, keeping our beaches clean and our oceans safe for our seagoing friends. We will now start meeting up regularly as follows. Please come join us!

#### Beach Cleanup:

Last Monday of the month

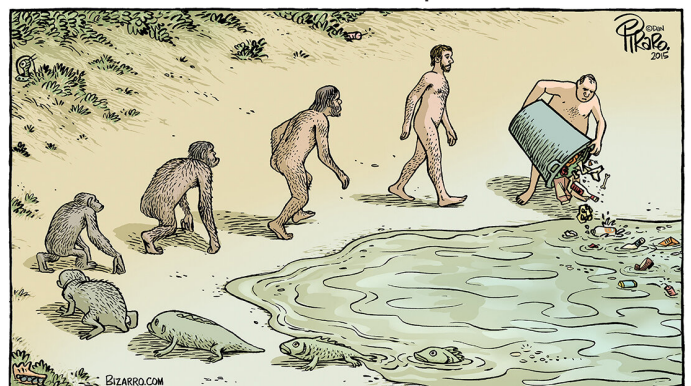
8:30 am

Meet at the pier

Mighty Matt, Weej, Lesley, Lynn, Kieu, Susan, Rosa



So, how far have we evolved?  
Give a hoot! Don't pollute!



## The Clover Question from Laura Bard

Here's my take on the clover question that came up at the last meeting:

Clover..do you want it in your lawn? I think the resounding answer is a yes!. While I have not found any definitive trials of micro or mini clover in lawn in Southern California the majority of the research I've read points to great benefits. Clover is a legume, member of the pea family, and as with all of these species it fixes atmospheric nitrogen into the soil.

Clover also draws up and accumulates trace minerals that become available to turf grass when the clover decomposes.

It seems there was a 'war' on clover waged in the 60's by the lovely folks who wanted to sell us broadleaf herbicides. Clover, which at one time was included in most turf seed mixes, was labeled as and seen as a weed that needed to be eliminated.

So if you must have a lawn adding a micro or mini clover to your turf will enhance the soil and help minimize the use of fertilizers that inevitably run off into our ocean waters.

You can purchase mini and micro clover seed (Trifolium repens) online... here's a couple of links:

[https://www.outsidepride.com/seed/clover-seed/miniclover.html?gclid=Cj0KCQjwklGKBhCxARIsAINMioJOA1krMiNtmVv9gO36lQkWPcKbYn8Vgpeb-SmHRzr7NbUF8yyJ\\_P8aAjL2EALw\\_wcB](https://www.outsidepride.com/seed/clover-seed/miniclover.html?gclid=Cj0KCQjwklGKBhCxARIsAINMioJOA1krMiNtmVv9gO36lQkWPcKbYn8Vgpeb-SmHRzr7NbUF8yyJ_P8aAjL2EALw_wcB)

<https://www.westcoastseeds.com/products/microclover-seed>

## Composting (con't)

adding 8 cups of ammonium sulfate to the large bin, and 6 cups of ammonium sulfate to the small bin.

### Composting

Once composting starts in the warmth of our early autumn, the volume of the compost pile shrinks rapidly, and any "overflow" material in a temporary bin can be added to the main pile. By composting slowly over several months, I can avoid the necessity to shred the plant materials, and I only need to turn over the compost twice or so. Once the material within a foot of the top of the pile looks substantially composted, finished compost can be harvested from the bin. I've built a wood-framed sieve using 1X1" mesh galvanized fence material <picture>. The sieve fits on top of my wheelbarrow for convenience. Sieving the compost once makes it suitable for my purposes, and any incompletely composted woody materials are sieved out and added to the next compost pile. Since we are amateur winemakers, we utilize our old 20-gallon fermenters (20 gallon food-grade plastic "trash cans") to store finished compost (be sure to use the domed lids, so that there are no shallow pools of water to incubate mosquito larvae). I incorporate a lot of compost in the top foot of my raised beds, about 1/3 by volume, and the renewal mixture I use to renew these beds every year is close to 2/3 compost. Much of this compost is my garden compost, although I also incorporate some composted steer and chicken manures.

<https://davesgarden.com/guides/articles/view/3942>

## Composting from Warren Vidrine

My main objective is a year-to-year supply of compost for gardening, especially for our raised-bed vegetable gardening. My approach is to use a slow method so that I can get sufficient good compost with a minimum of work, and obtain a richer ecosystem of fungal and microbial components.

### The compost bins

For this purpose, I have built 2 compost bins. The full larger bin is 400 gal (1.84 cu yd), while the full smaller bin is 300 gal (1.36 cu yd). A ventilated grid of PVC pipe is placed at the bottom of each bin in order to provide aeration, a layer of branches is placed above the grid to avoid drowning the grid in composting muck, and the front wall of each bin is composed of removable 3/4" thick redwood slats. On occasion, I set up an additional "overflow" temporary bin or two, usually a simple 4X4 foot square pen of 2X4 inch mesh wire fencing. My 2 permanent bins are sited in a shady corner of my garden, and any temporary bins are placed under the shade of trees.



### Building the compost pile

Keeping the pile moist with scheduled irrigation accelerates composting. Garden waste, coffee grounds, pomace (grape skin presscake from winemaking), tree trimmings (minus large branches), and some grass clippings are the major part of the materials used. We also keep a poubelle on our kitchen work counter and regularly empty it into the bin. We do avoid putting meat scraps into the mix. We successfully avoid strong odors by layering branches and stalks in the mix (which maintains aeration and allows soil insects to migrate easily), maintaining fungal and bacterial inoculation by sprinkling in some garden soil and miscellaneous dirt. Aeration prevents sulfurous smells, and the slight acid balance holds back odoriferous amines. My method does not "cook" the compost at a pasteurizing temperature, so it is best to exclude diseased foliage and seed-bearing weeds. I've even seen a few grape seedlings in my garden beds from the composted pomace!

### Chemistry

I'm a chemist by profession, but for the most part winemaking and gardening are fortunately not chemically challenging. I've already mentioned odor control using the natural acidification produced by aeration (the word "oxygen" means "acid-former"! ). Adequate nitrogen is needed for successful composting, but that can be achieved by including at least one-seventh green vegetation in the mix. If your mix tends towards woody (more "browns", less "greens", acidity can be increased and composting significantly accelerated by sprinkling a few cupfuls of ammonium sulfate onto the pile and watering it in. As an extreme case, you could compost a pure "brown" material like wood chips by



P.O. Box 3891  
San Clemente, CA 92674-3891

## **San Clemente Garden Club Activities**

### **October 2021**

October 6	Board Meeting	10:00 am
October 6	Meeting and Program	1:00 pm
October 8	<b>Plant Sale Set-up</b>	9:00 am - 2:00 pm
October 9	<b>Fall Plant Sale</b>	8:00 am - 1:00 pm
October 13	Civic Beautification	
	Park Semper Fi	8:30 am
October 20	Garden Therapy-Pumpkins	12:45 pm
October 20	Civic Beautification	
	Casa Romantica Garden	8:30 am
October 25	OC District meeting	9:00 - 11:00 am
October 27	<b>Hypertufa Workshop</b>	9:00 am

**In accordance with announcements from CDC and WHO,  
all activities and events for the ensuing 2021 season will be  
subject to change.**